



# Maricopa County **COMPREHENSIVE PLAN** **UPDATE**

*In-Person Meeting*



# WELCOME



---

We are excited to have you be part of the  
**Maricopa County Comprehensive Plan  
Update!**

---



# OUR TEAM

## County Staff

Adam Cannon, AICP

Senior Planner/ Project Manager & Point of Contact

Tom Ellsworth, AICP

Director, Planning & Development

Darren Gerard, AICP

Planning Division Manager, Planning & Development

Rachel Applegate

Planning Supervisor, Planning & Development

## Consultant Staff

Matt Klyszeiko, AICP

Project Manager (Michael Baker International)

Steven Sifferman, AICP

Deputy Project Manager (Michael Baker International)

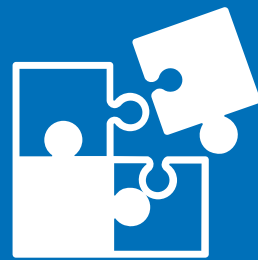
Brock Barnhart

Public Outreach (The Barnhart Company)

Technical Specialists

Terracon, ESI Corporation, Small Giants

# OVERVIEW



## PURPOSE

To introduce the Comprehensive Plan update process and engage in an interactive workshop to identify potential opportunities and challenges that may influence the plan development process.



## AGENDA

- Plan Background
- Plan Process
- Questions & Responses
- Existing Conditions
- Interactive Polling
- Next Steps
- Questions & Responses
- Closing



# BACKGROUND

The Maricopa County Comprehensive Plan is the long-range plan for how the county will grow and serve its community members in the future.

The Comprehensive Plan addresses required\* topics (elements) such as:

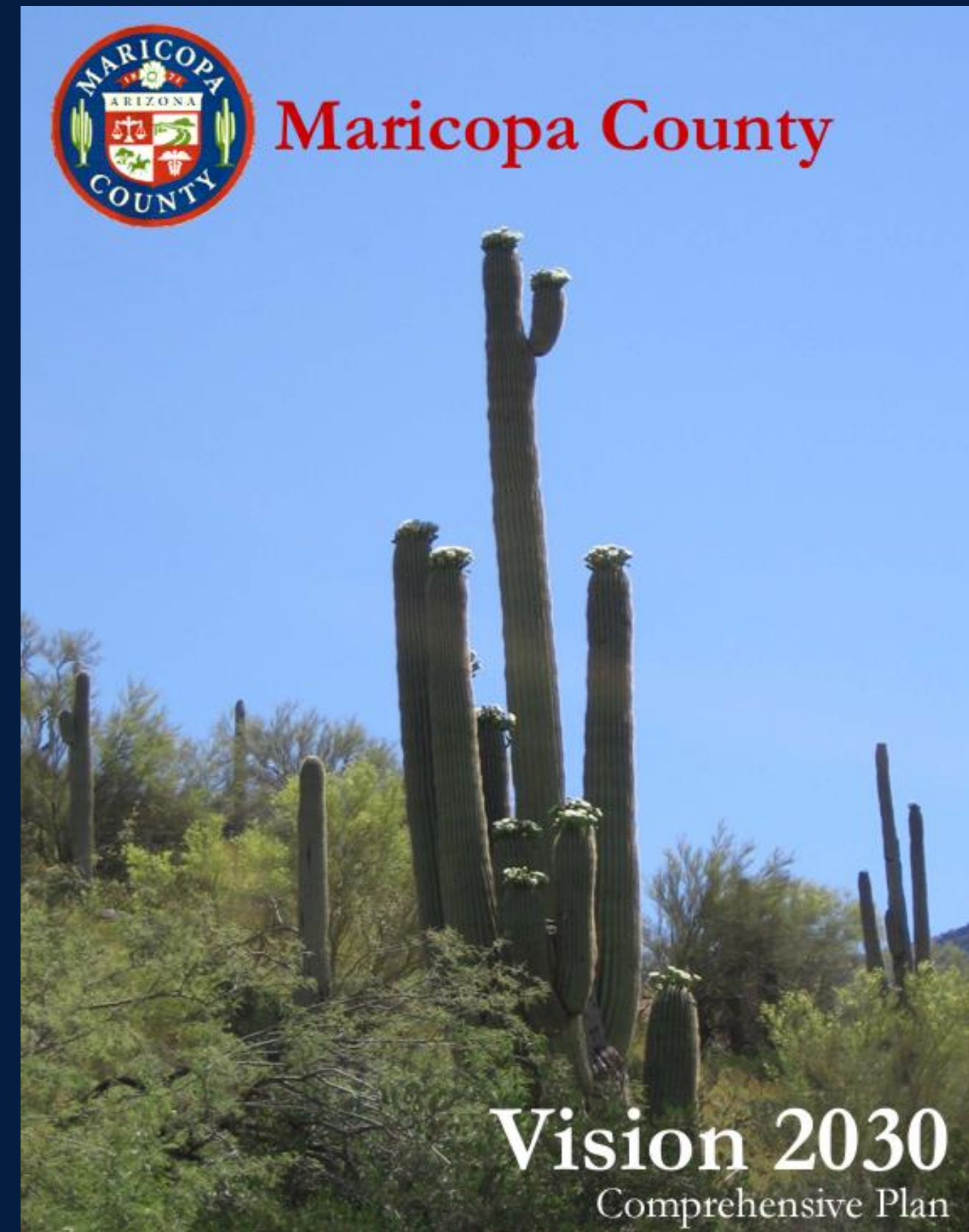
- Land use\*
- Circulation\*
- Water resources\*
- Energy\*
- Open space\*
- Growth areas\*
- Environment\*
- Cost of development\*
- Economic growth



# BACKGROUND

## Why update the Comprehensive Plan?

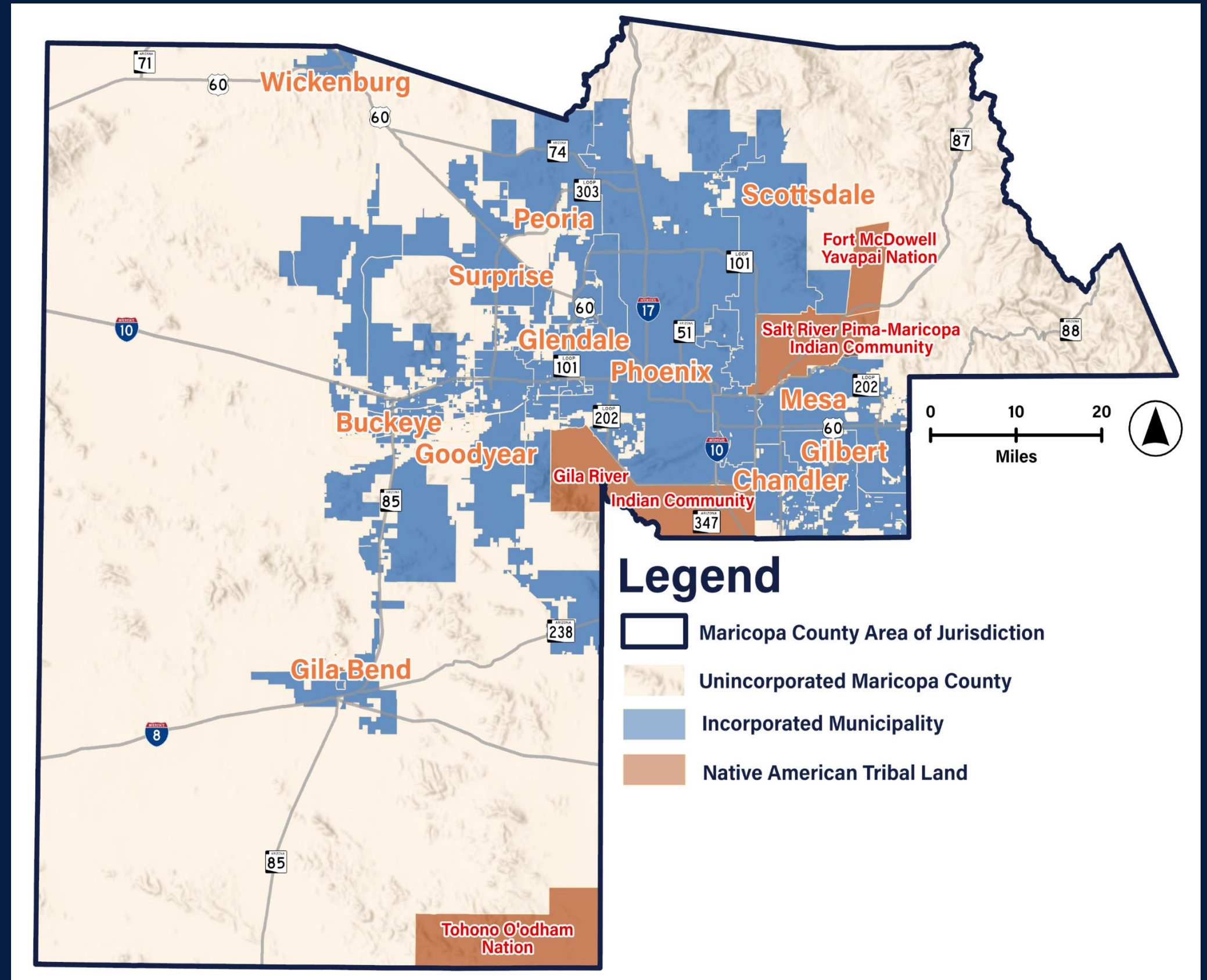
- This plan was last updated and adopted in 2016.
- Identify and address new data, as well as existing and projected conditions.
- Re-evaluate and revise our vision for future growth.
- Align with supporting County plans, initiatives, and programs.
- Establish a definitive and effective implementation strategy.



# BACKGROUND

What areas will the Plan address?

The Comprehensive Plan applies to unincorporated areas of the County.



# BACKGROUND

## How is the Comprehensive Plan Used?

The Comprehensive Plan provides a set of broad policies and land use designations that establish the basis for future land use development patterns and regulations.

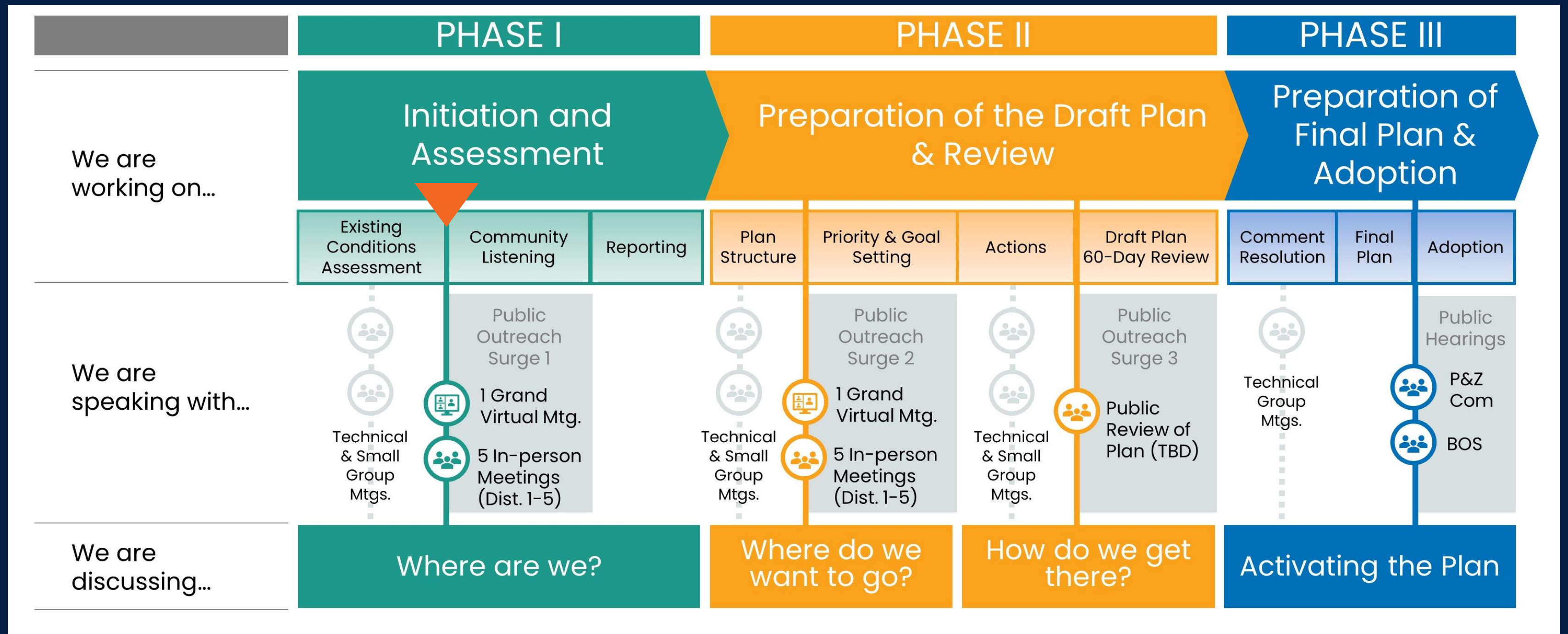
The Comprehensive Plan is not a regulatory document. The County's Zoning Ordinance and supporting development regulations provide specific controls about how property owners may use and develop their land.





# SCHEDULE & PROCESS

The Comprehensive Plan is expected to be adopted by Spring 2026. The following graphic details each phase of the Comprehensive Plan Update process.





# HOW TO GET INVOLVED

## Visit our website

To learn more about the Comprehensive Plan Update process and how to get involved visit [www.framework2040.com](http://www.framework2040.com).



## Engage virtually or in-person

Community input is vital to the success of this planning effort. To make participation as convenient as possible, we have both virtual and in-person options to get involved in the development of the Comprehensive Plan.

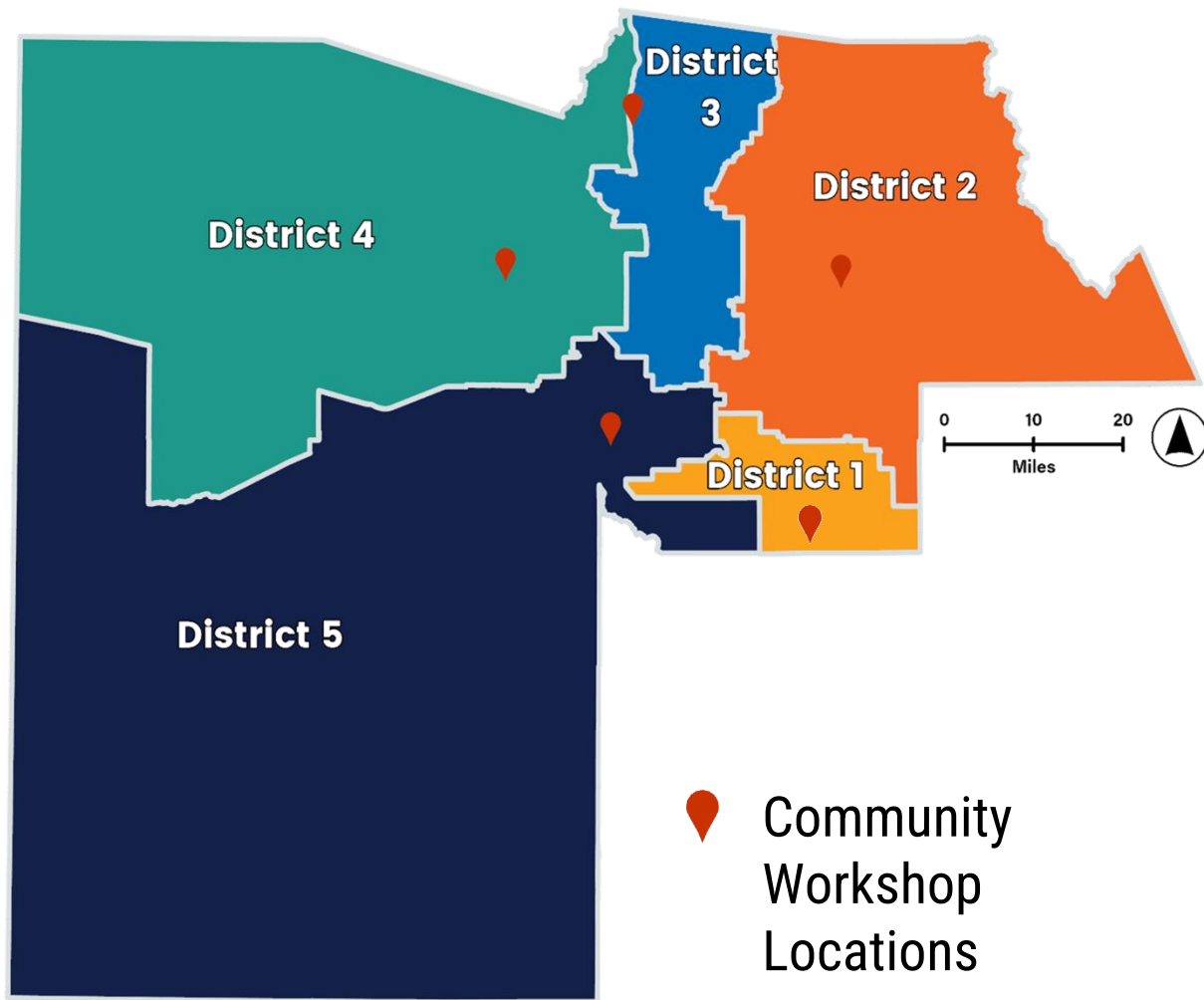


## Sign up for updates

Subscribe on the project website to receive email notices about public meetings, project updates, and other news and resources.



# SCHEDULED MEETINGS



## Supervisor District

# 1

**December 2, 2024**  
Arizona College Prep HS  
5:30pm – 7:00pm

## Supervisor District

# 2

**November 13, 2024**  
Fountain Hills HS  
5:30pm – 7:00pm

## Supervisor District

# 3

**November 21, 2024**  
Anthem Civic Building  
5:00pm – 6:30pm

## Supervisor District

# 4

**November 20, 2024**  
Valley Vista HS  
6:00pm – 7:30pm

## Supervisor District

# 5

**November 14, 2024**  
Betty H. Fairfax HS  
5:30pm – 7:00pm



# QUESTIONS & RESPONSES





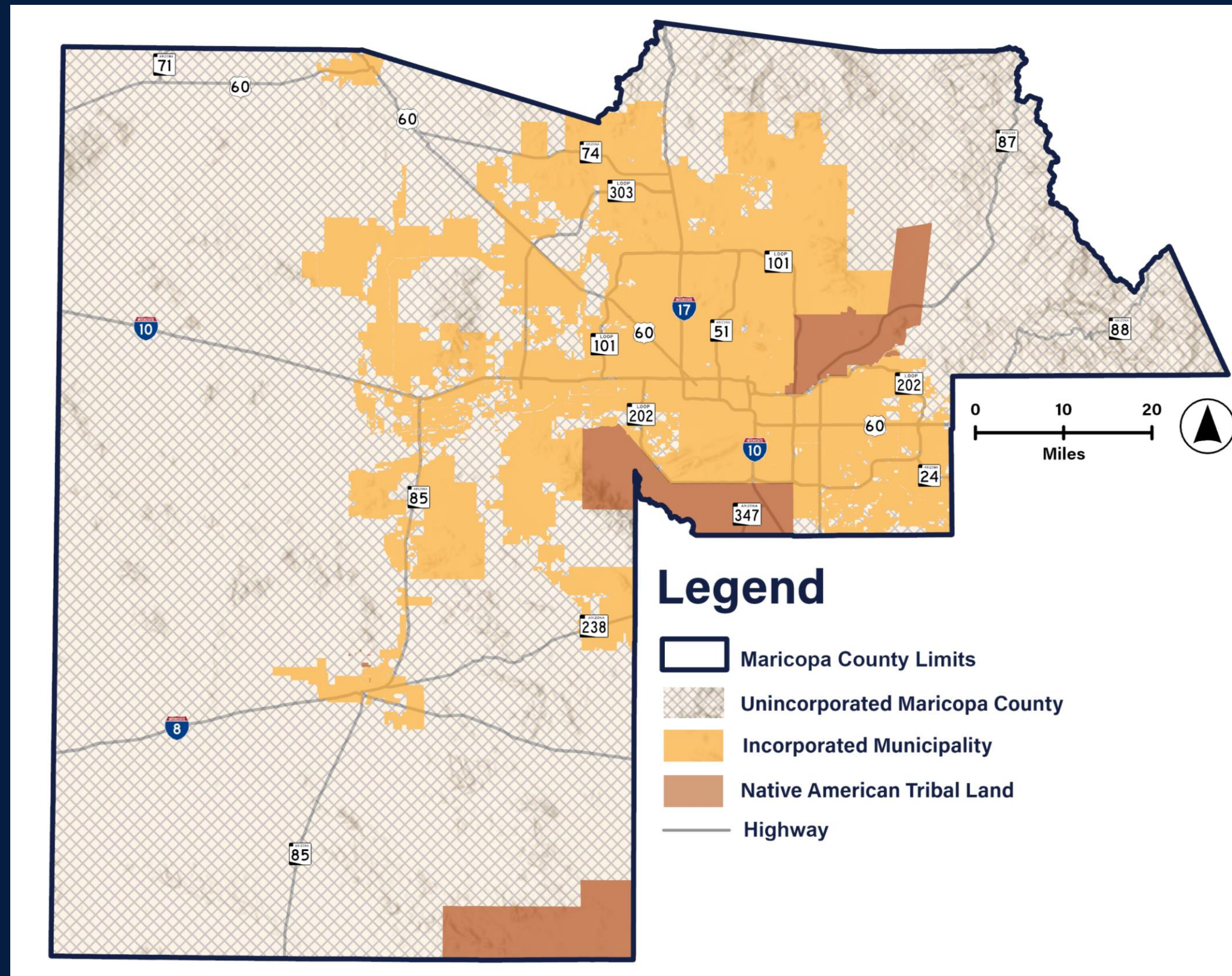
# WHERE ARE WE NOW

Existing conditions review



# EXISTING CONDITIONS

## Unincorporated Maricopa County (Area of Jurisdiction)



Maricopa County Area:  
**9,224 mi.<sup>2</sup>**

Unincorporated  
Maricopa County Area:  
**6,597 mi.<sup>2</sup>**

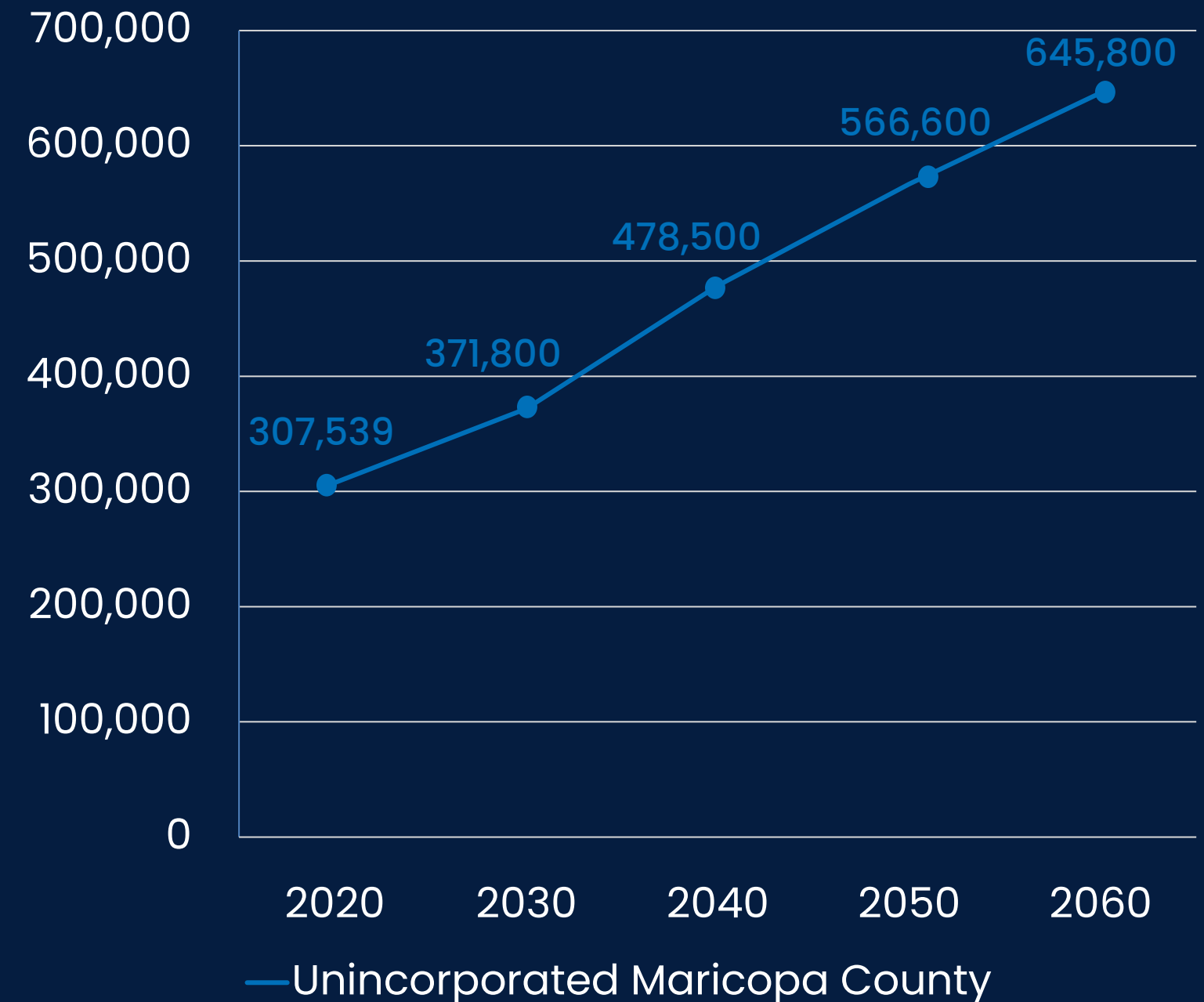
# EXISTING CONDITIONS

## Growth & Projections

While growth is projected to significantly ease in comparison to prior decades, growth within unincorporated Maricopa County is anticipated to remain steady over the following decades.

Year	Incorporated Area Population	Incorporated Area Growth Rate	Unincorporated Area Population	Unincorporated Area Growth Rate
1990	1,951,675		170,426	
2000	2,861,266	46.6%	210,883	23.7%
2010	3,532,875	23.5%	284,242	34.8%
2020	4,113,029	16.4%	307,539	8.2%
2022	4,122,238	0.2%	308,633	0.4%

Source: U.S. Census Bureau Decennial Census 1990, 2000, 2010, and 2020 & 2022 American Community Survey 5-Year Estimates



Source: Maricopa Association of Governments, 2023 Socioeconomic Projections

# EXISTING CONDITIONS

## Municipal Annexations of County Land (2010–2022)

Since 2010, the County has lost approximately 66 square miles of unincorporated land to annexation into incorporated cities and towns across the valley.

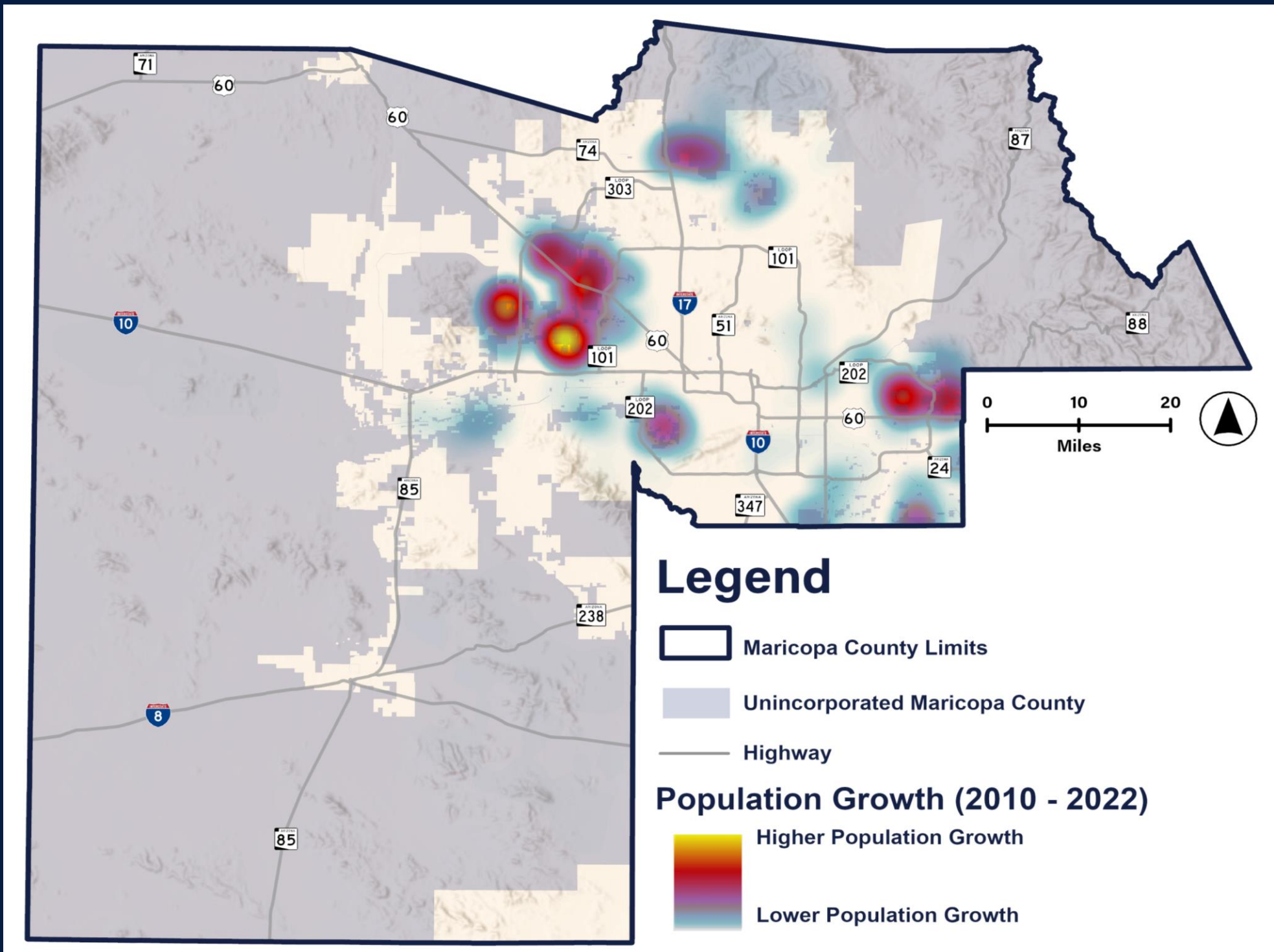
Year	Population	Unincorporated Area (sq. mi.)	Population Density (per sq. mi.)
2010	284,242	6,662.16	43 people/sq. mi.
(Municipal Annexations)	-	65.63	-
2022	308,633	6,596.53	47 people/sq. mi.

Source: U.S. Census Bureau Decennial Census 2010 & 2022 American Community Survey 5-Year Estimates



# EXISTING CONDITIONS

## Growth in Unincorporated Maricopa County (2010–2022)



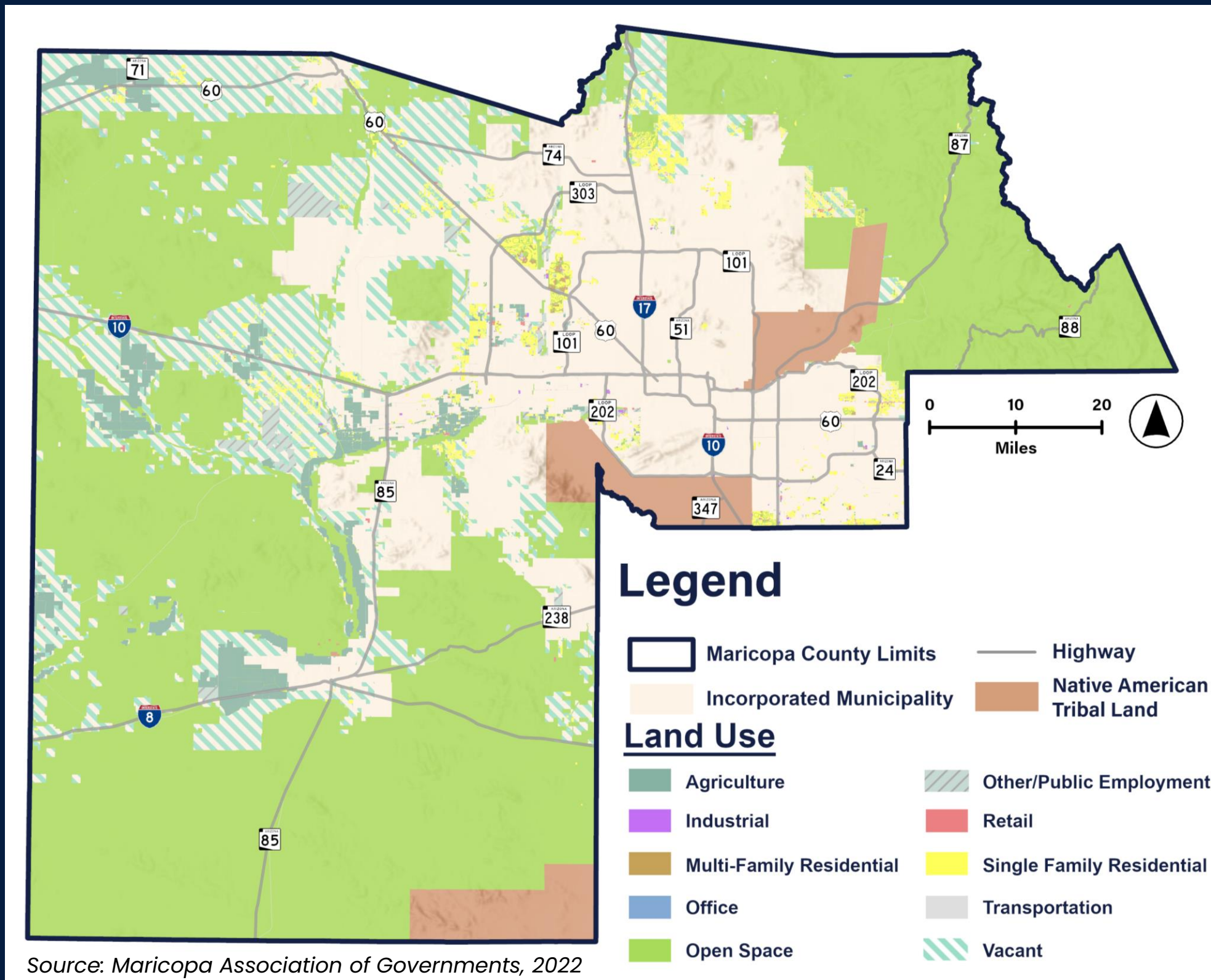
Year	Unincorporated Area Population	Unincorporated Area Growth Rate
2010	284,242	<b>8.6%</b>
2022	308,633	

Year	Incorporated Area Population	Incorporated Area Growth Rate
2010	3,532,875	<b>16.7%</b>
2022	4,122,238	

Source: U.S. Census Bureau 2010 American Community Survey 5-Year Estimates; 2022 American Community Survey 5-Year Estimates

# EXISTING CONDITIONS

## Existing Land Use (MAG 2022)

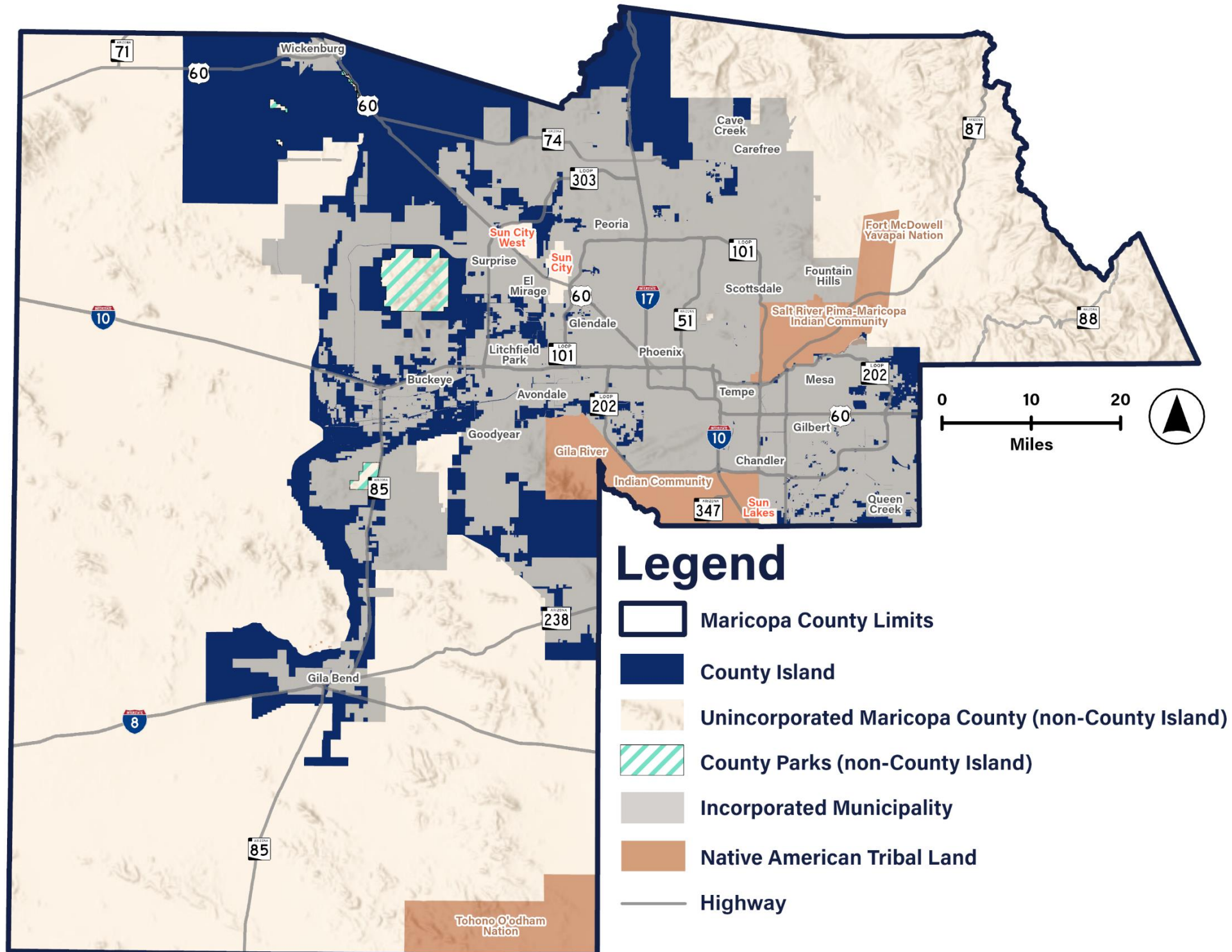


### Top 4 Land Uses

- Open Space – 73.53%
- Vacant – 18.16%
- Agriculture – 3.81%
- Single-Family Residential – 2.53%

# EXISTING CONDITIONS

## County Islands (2022)



### County Islands

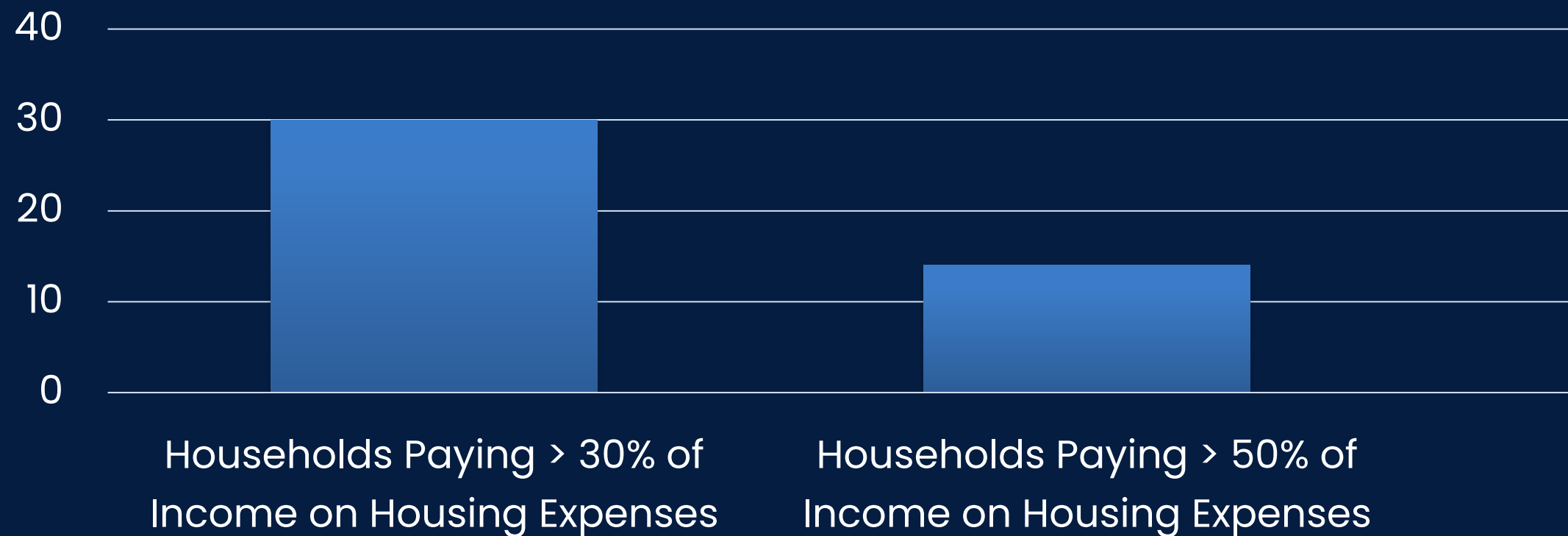
- Unincorporated County land that exists within a currently defined municipal planning area
- 1,105,714.45 acres of County Island land (dark blue)
- 432 County Islands ranging between 1 – 500 acres

Source: Maricopa County Planning & Development

# EXISTING CONDITIONS

## Housing

Across Maricopa County (including unincorporated and incorporated areas), approximately 499,668 households are cost-burdened, which reflects 30% of all households, while 14% of all households are spending half or more of their income on housing expenses.



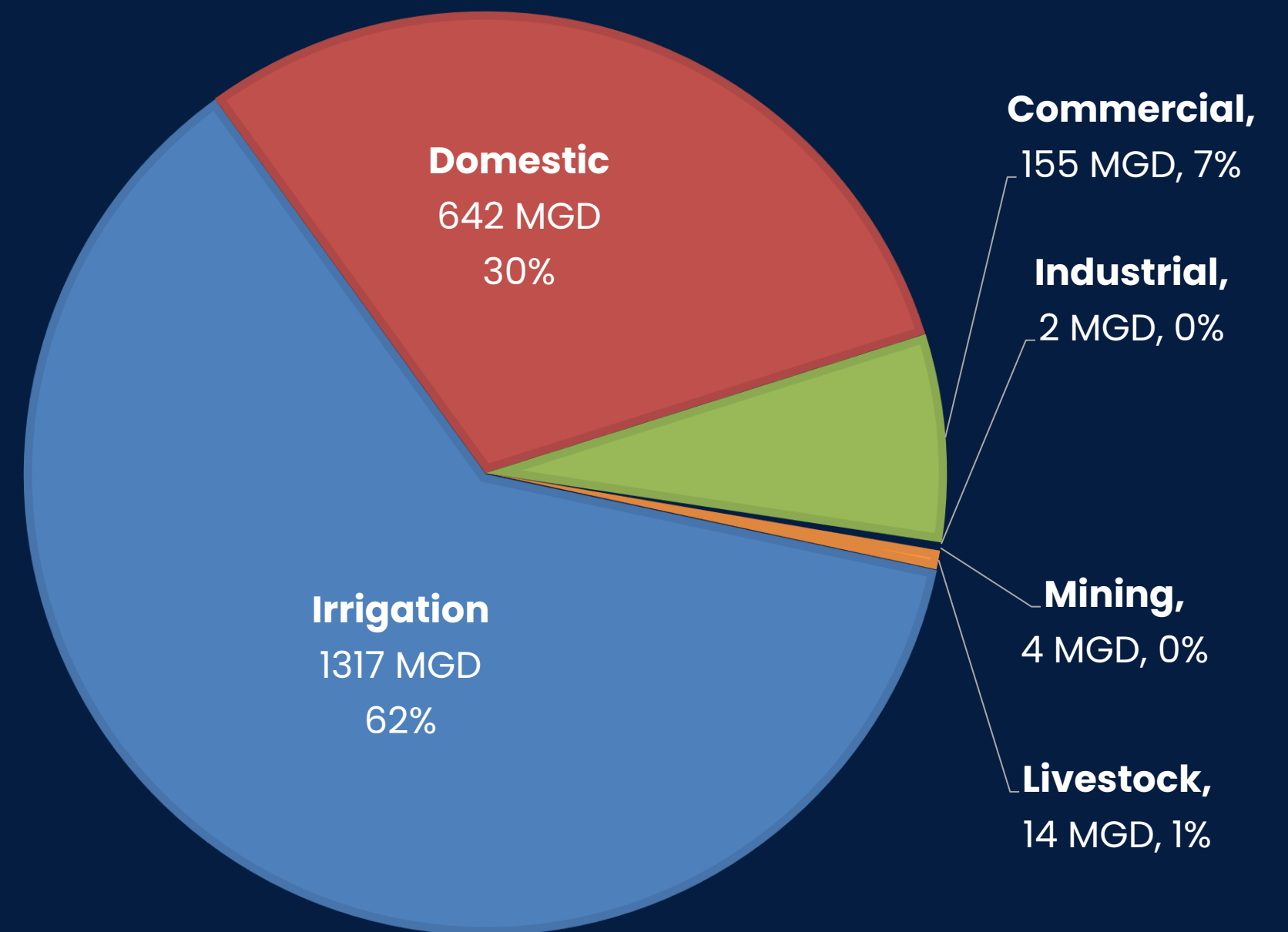
Source: U.S. Census Bureau 2022 American Community Survey 5-Year Estimates

# EXISTING CONDITIONS

## Water Resources

In Maricopa County as a whole, irrigation accounted for 62% of the county's water use in 2015 (the last year this data was collected), while municipal use accounted for 37%.

**How Water Is Used In Maricopa County  
(Million Gallons/Day)**



Source: USGS 2015, University of Arizona Water Resources Research Center (2021)

# INTERACTIVE POLLING

Share your  
feedback



# Poll Instructions

Use your phone camera  
and **scan the QR Code**

Or

Open your browser  
window and **go to  
menti.com**

**Type code on screen** when  
prompted

**Mentimeter Poll Code\***

**QR Code\***

**\*Note that the Mentimeter poll code and QR code link were redacted following the in-person meetings.**

**Note that the results of the Mentimeter poll have been redacted from this generic version of the Community Workshop Public Outreach Round #1 presentation following the in-person meetings.**

# **Poll**

## **Question 1**

**Describe Maricopa County in three words or less? (word cloud)**



**Note that the results of the Mentimeter poll have been redacted from this generic version of the Community Workshop Public Outreach Round #1 presentation following the in-person meetings.**

# Poll

## Question 2

You could choose to live  
other places.

**Why do you choose to live  
in Maricopa County?**  
(short answer)

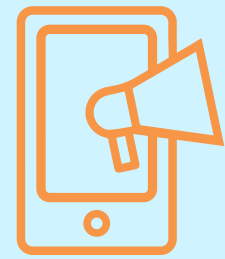
**Note that the results of the Mentimeter poll have been redacted from this generic version of the Community Workshop Public Outreach Round #1 presentation following the in-person meetings.**

# Poll

## Question 3

**What do you love and/or value most about living in, working in, doing business in, or visiting the County?**  
(short answer)

# NEXT STEPS



## Online Engagement

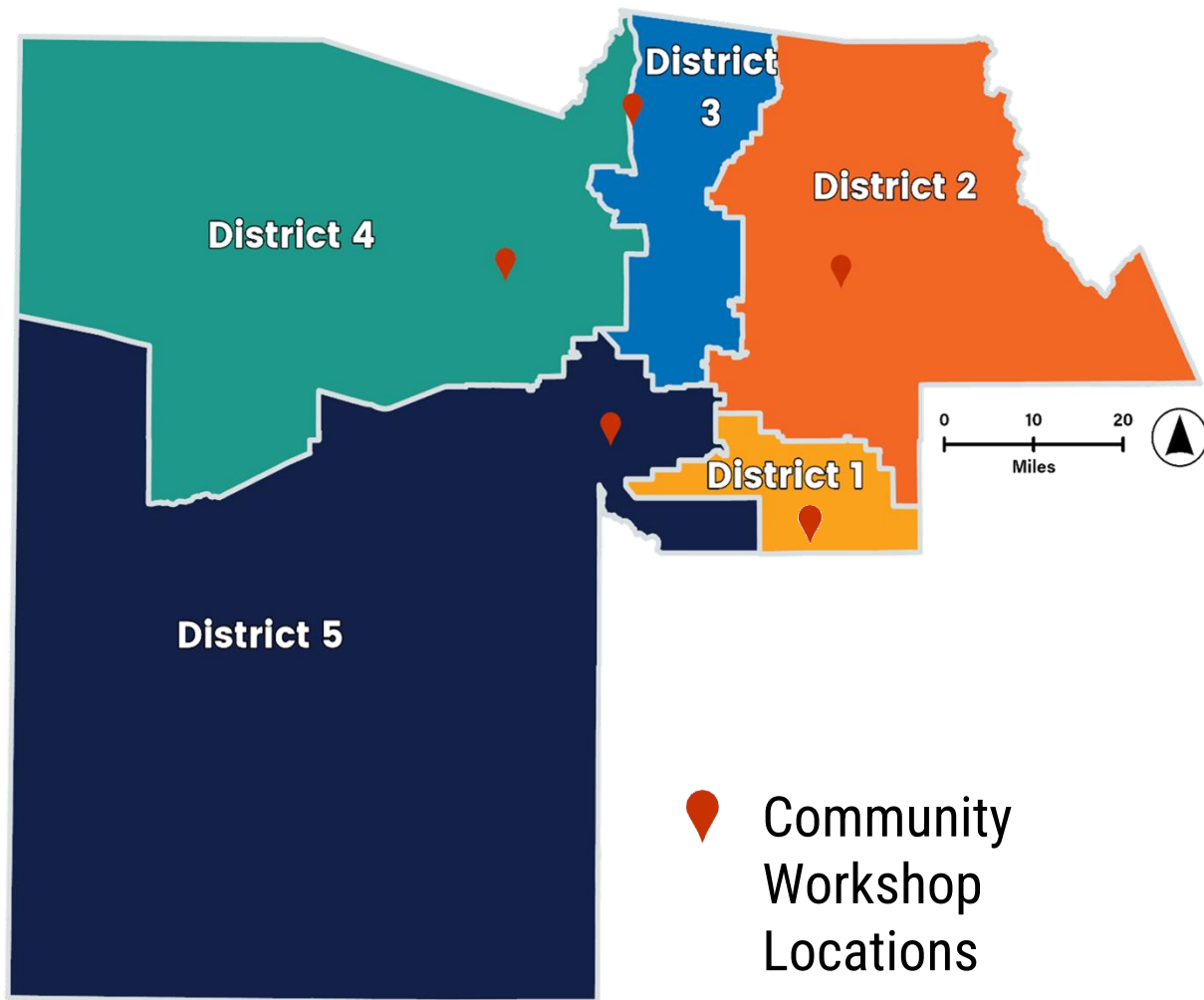
Go online and share your thoughts on the **Idea Wall**, complete the detailed **Survey**, and place a marker on a **Map**.



## Report Back

A **second round** of public outreach will be conducted in **Spring 2025**.

# SCHEDULED MEETINGS



## Supervisor District

# 1

**December 2, 2024**  
Arizona College Prep HS  
5:30pm – 7:00pm

## Supervisor District

# 2

**November 13, 2024**  
Fountain Hills HS  
5:30pm – 7:00pm

## Supervisor District

# 3

**November 21, 2024**  
Anthem Civic Building  
5:00pm – 6:30pm

## Supervisor District

# 4

**November 20, 2024**  
Valley Vista HS  
6:00pm – 7:30pm

## Supervisor District

# 5

**November 14, 2024**  
Betty H. Fairfax HS  
5:30pm – 7:00pm



# QUESTIONS & RESPONSES





# Thank You For Participating

[www.Framework2040.com](http://www.Framework2040.com)

